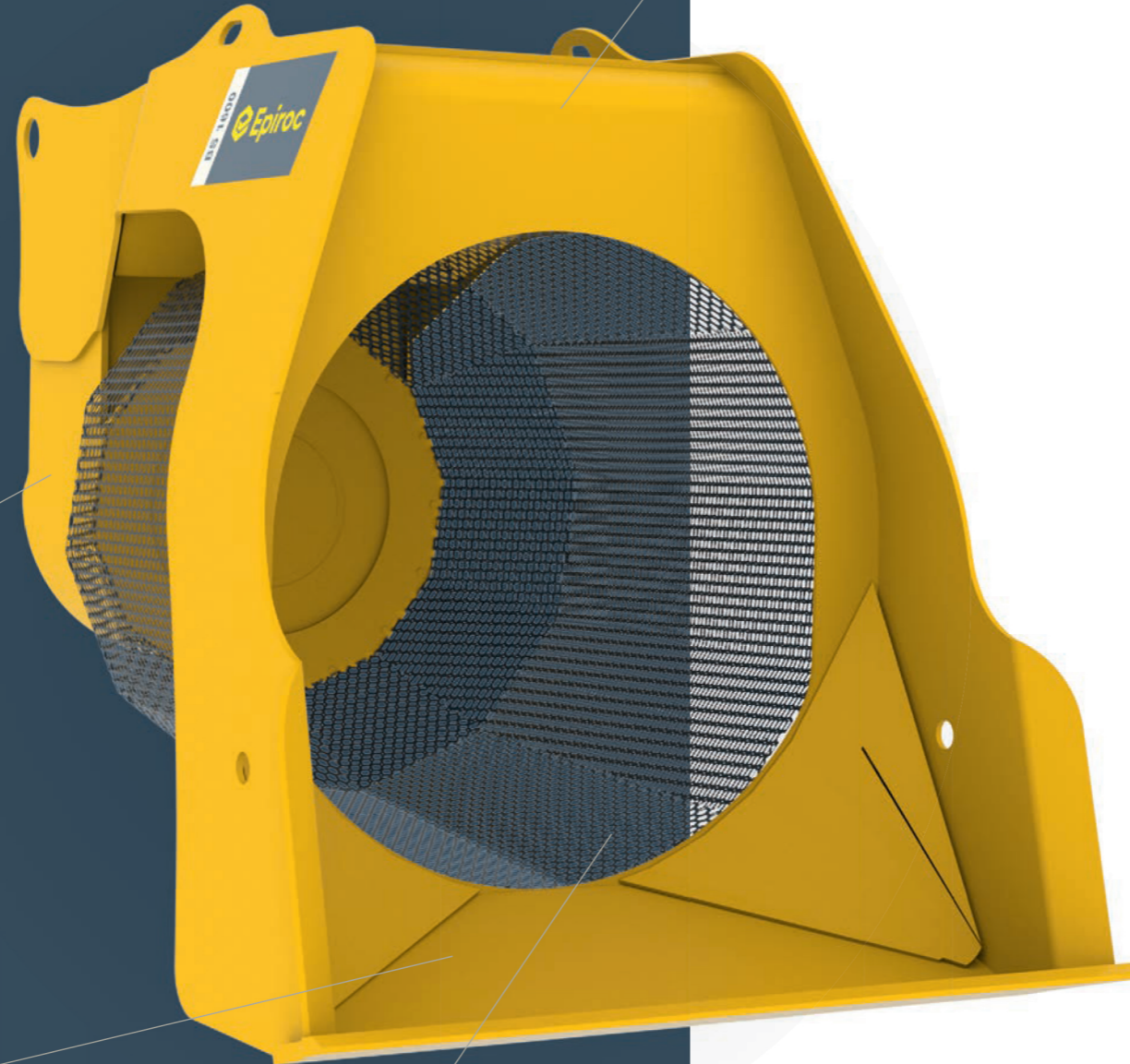


Sort it out on-site

Sort and separate rocks, crushed concrete and recycling material with speed and precision using our high-performance Bucket Screeners.

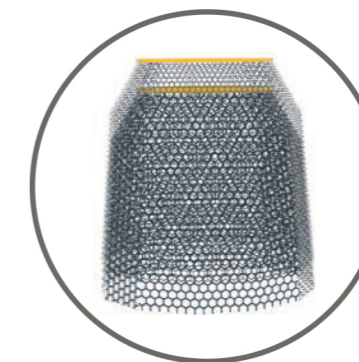


The use of **special wear resistant steel** guarantees highest durability even under the harshest conditions

The internal **timing belt transmission**, driven by a powerful hydraulic motor, allows the use of a **large main roller bearing** and optimizes productivity.

The **large hopper capacity** enables maximum intake and thus a constant feeding with material.

Extra large dodecagonal baskets and hexagonal profile of the screening mesh enables efficient material screening.



Stackable screening baskets with different mesh sizes: 20/30/40/50/60 and 80 mm

| BS range | | BS 1600 | BS 2200 |
|-----------------------------------|----------------|---------|---------|
| Carrier weight class ¹ | t | 18–25 | 24–38 |
| Service weight ² | kg | 1,710 | 2,450 |
| Product weight | kg | 1,550 | 2,200 |
| A | mm | 2,500 | 2,800 |
| B | mm | 1,700 | 2,000 |
| C | mm | 1,610 | 1,890 |
| D | mm | 1,300 | 1,600 |
| E | mm | 1,230 | 1,425 |
| Loading volume | m ³ | 1.5 | 3 |
| Oil flow rate | l/min | 160–180 | 180–200 |
| Max. operating pressure | bar | 200 | 250 |

¹ Weights apply to standard carriers only. Any variances must be agreed with Epiroc and/or the carrier manufacturer prior to attachment.
² Attachment with average-sized adapter plate

